

Installation and Service Instructions for Self Adjust Brakes 81,000 Series

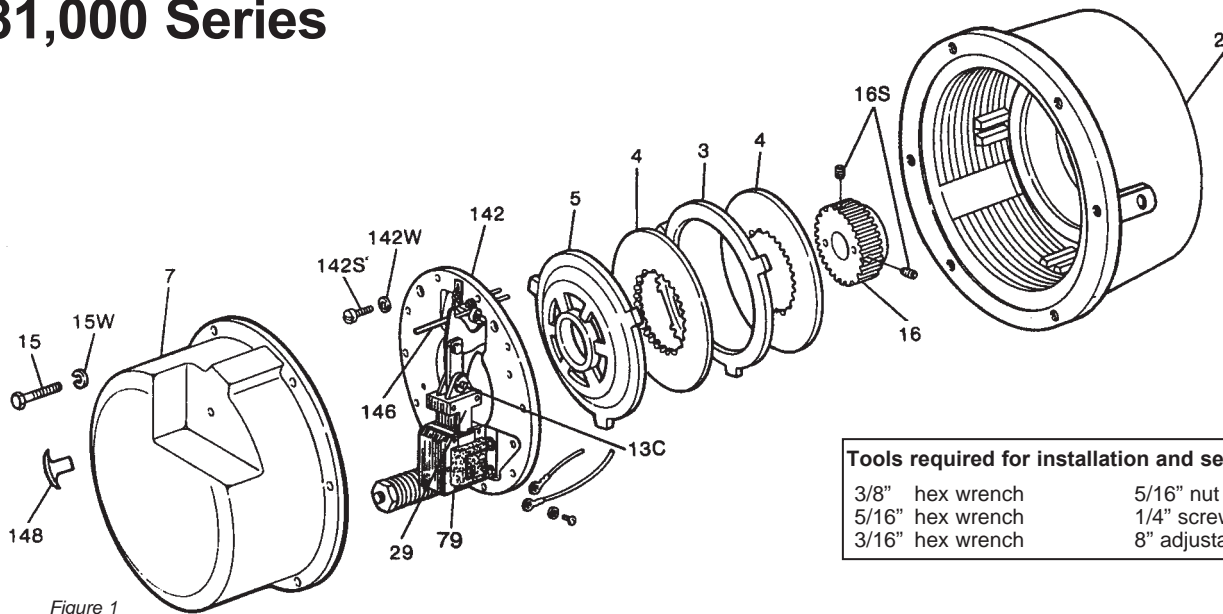
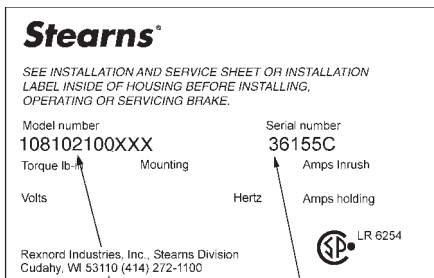


Figure 1

Tools required for installation and servicing:	
3/8" hex wrench	5/16" nut driver
5/16" hex wrench	1/4" screwdriver
3/16" hex wrench	8" adjustable wrench



Note:
MODEL NUMBER
Refer to actual nameplate on brake for additional information

SERIAL NUMBER

Important

Please read these instructions carefully before installing, operating, or servicing your Stearns Brake. Failure to comply with these instructions could cause injury to personnel and/or damage to property if the brake is installed incorrectly. For definition of limited warranty/liability, contact Stearns Div., Cudahy, WI 53110, (414) 272-1100.

Caution

- Installation and servicing must be made in compliance with all local safety codes including Occupational Safety and Health Act (OSHA). All wiring and electrical connections must comply with the National Electric Code (NEC) and local electric codes in effect.
- Use of this brake in atmospheres containing explosive gases and dusts must be in accordance with NEC article 501. This brake is not suitable for use in certain atmospheres containing explosive gases and dusts. **HazLoc** inspection authorities are responsible for verifying and authorizing the use of suitably designed and installed **HazLoc** equipment. When questions arise consult local **Authority Having Jurisdiction (AHJ)**.

- To prevent an electrical hazard, disconnect power source before working on the brake. If power disconnect point is out of sight, lock disconnect in the *off* position and tag to prevent accidental application of power.
- Make certain power source conforms to the requirements specified on the brake nameplate.
- Be careful when touching the exterior of an operating brake. Allow sufficient time for brake to cool before disassembly. Surfaces may be hot enough to be painful or cause injury.
- Do not operate brake with housing removed. All moving parts should be guarded.
- Installation and servicing should be performed only by qualified personnel familiar with the construction and operation of the brake.
- For proper performance and operation, only genuine Stearns parts should be used for repairs and replacements.
- After usage, the brake interior will contain burnt and degraded friction material dust into the air or inhaling it, as this may be dangerous to your health.
- DO NOT BLOW OFF DUST** using an air hose. It is important to avoid dispersing dust into the air or inhaling it, as this may be dangerous to your health.
 - Wear a filtered mask or a respirator while removing dust from the inside of a brake.
 - Use a vacuum cleaner or a soft brush to remove dust from the brake. When brushing, avoid causing the dust to become airborne. Collect the dust in a container, such as a bag, which can be sealed off.
- Caution!** While the brake is equipped with a manual release to allow manual shaft rotation, the motor should not be run with the manual

release engaged, to avoid overheating the friction disc(s).

General Description

This series brake is spring-set, electrically released. They contain two or three rotating friction discs (4) driven by a hub (16) mounted on the motor or other shaft.

Note: Fan-guard mounted brakes requiring IP54 & IP55 protection may require additional sealing measures beyond seals provided with this brake. Pressurized sprays aimed at the fan and brake hub surfaces can result in fluid migration along the motor shaft and keyway, and into the brake. The use of an appropriate sealant such as *RTV* or a *forsheada* seal is advised.

Operating Principle

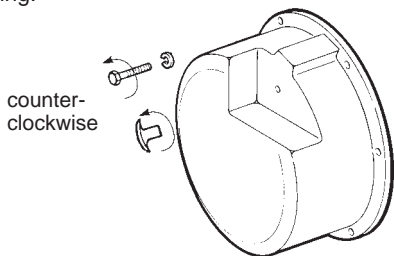
This series contains two or three friction discs (4) assembled alternately between the endplate (2) friction surface, stationary disc(s) (3) and pressure plate (5). The stationary components are restrained from rotating by being keyed into the endplate. With the brake released, all disc pack components are free to slide axially and the friction disc(s) to rotate.

Brake release occurs when the solenoid coil is electrically energized, causing the solenoid plunger to travel a specified distance and through a lever system, overcoming the pressure spring force. This action released the clamping force on the disc pack, thereby allowing the friction disc(s) and brake hub to rotate.

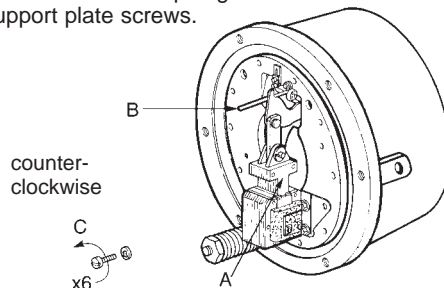
Brake sets and torque is produced when electric current to the solenoid coil is interrupted, thereby collapsing the solenoid magnetic field. The solenoid plunger returns to its original de-energized position allowing the lever arm to move forward by virtue of the compressed torque springs. This action compressed the disc pack components which applies a retarding torque to the brake hub and ultimately restores the brake to a spring-set condition.

BRAKE MOUNTING

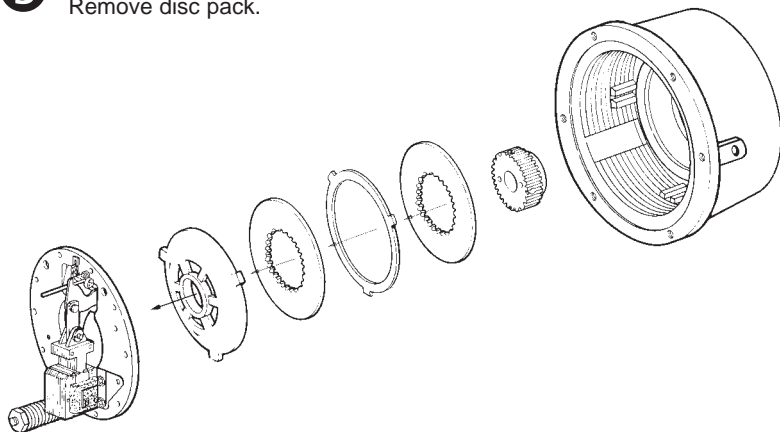
- 1** Remove manual release knob.
Remove housing screws.
Remove housing.



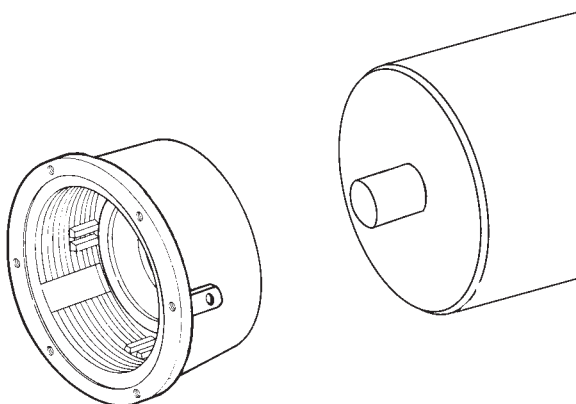
- 2** A. Push plunger down.
B. Pull manual release to hold plunger.
C. Remove support plate screws.



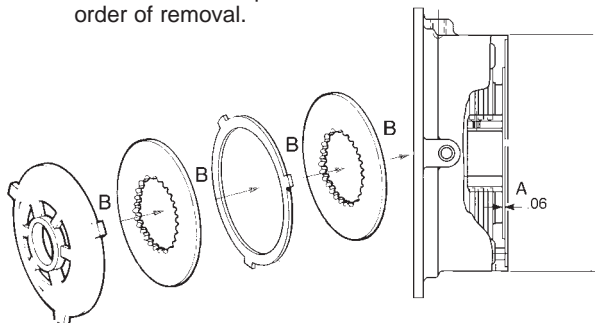
- 3** Lift off support plate.
Remove disc pack.



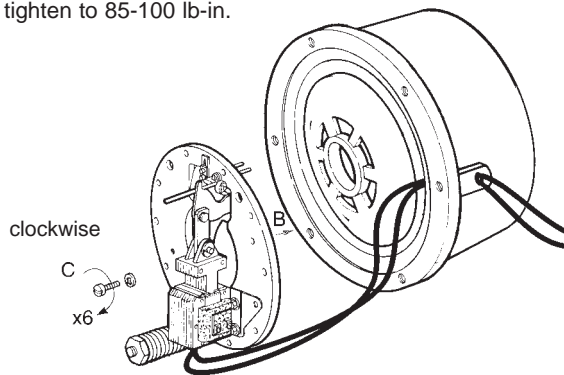
- 4** A. Position endplate on motor register.
B. Insert four mounting bolts and tighten.
(Torque per manufacturer specification)



- 5** A. Position hub on shaft as shown.
Tighten set screws to motor shaft.
Torque to: 5/16" - 156 lb-in;
3/8" - 288 lb-in;
1/2" - 625 lb-in.
B. Reassemble disc pack in reverse*
order of removal.



- 6** A. Route lead wires through conduit hole.
B. Position support plate on endplate.
C. Insert six mounting screws with lockwashers;
tighten to 85-100 lb-in.

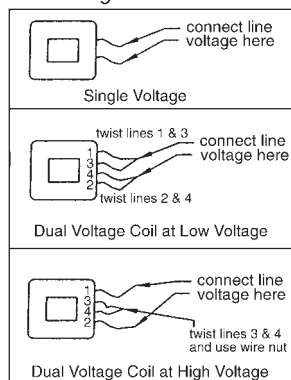


- 7** AC coils are 50/60 hz, single phase rated. Power supply to coil must not have current or frequency limiting output that is less than the coil requirement. Voltage supply to the coil must be within $\pm 10\%$ of nameplate rating.*

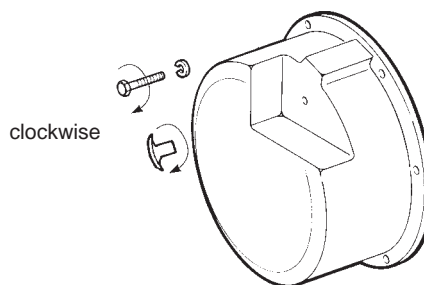
Caution: Keep wiring away from pinch points.

* For DC voltages see sheet 8-078-950-00.

Coil Wiring

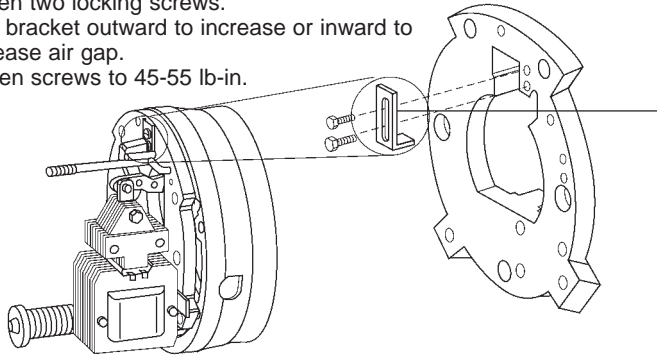


- 8** Replace housing.
Tighten housing screws to 130 lb-in and release knob to 50 lb-in.

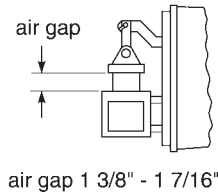


AIR GAP ADJUSTMENT

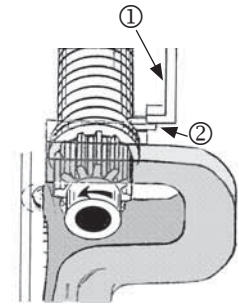
- 1** Loosen two locking screws.
Slide bracket outward to increase or inward to decrease air gap.
Tighten screws to 45-55 lb-in.



↑ increase air gap
↓ decrease air gap



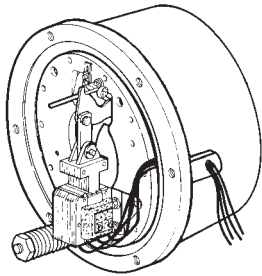
Wrap spring stop ① is positioned above the tang of the wrap spring ②



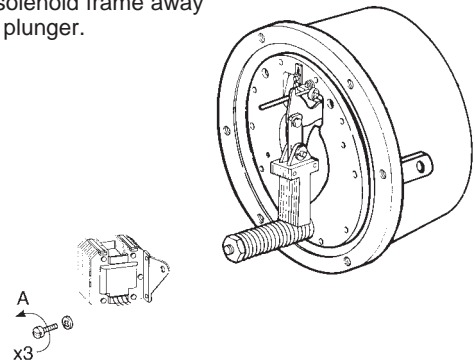
Note: Refer to page 2, Brake Mounting, for removal and replacement of housing.

COIL REPLACEMENT

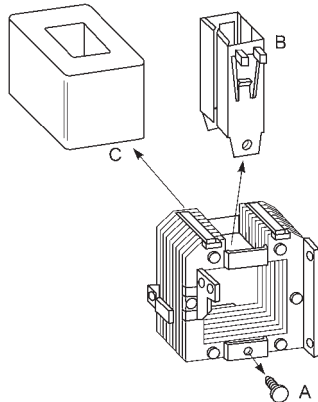
- 1** Disconnect coil lead wires from power source and pull them out of the brake.



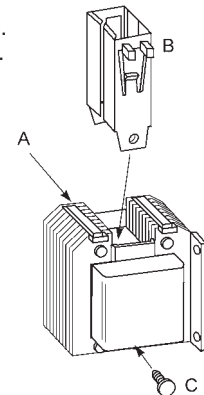
- 2** A. Remove solenoid mounting screws.
B. Lift solenoid frame away from plunger.



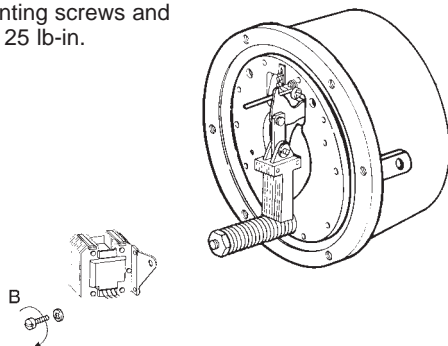
- 3** A. Remove guide screws.
B. Lift guides out of coil.
C. Push coil out of frame.



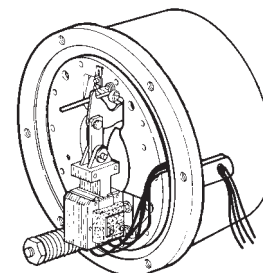
- 4** A. Insert new coil.
B. Press plunger guides into place.
C. Insert and tighten guide screws.



- 5** A. Slide coil assembly on to plunger.
B. Insert mounting screws and tighten to 125 lb-in.

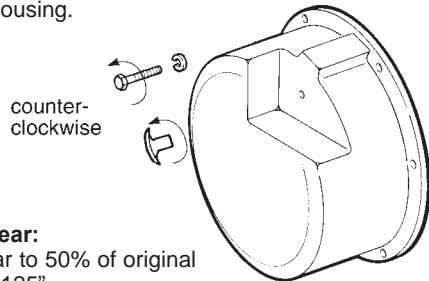


- 6** Reroute coil wires and reconnect to power supply.



FRICION DISC REPLACEMENT

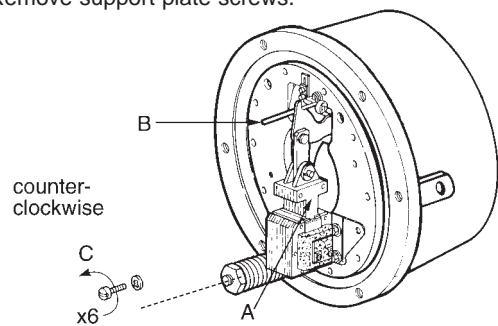
- 1** Remove manual release knob.
Remove housing screws.
Remove housing.



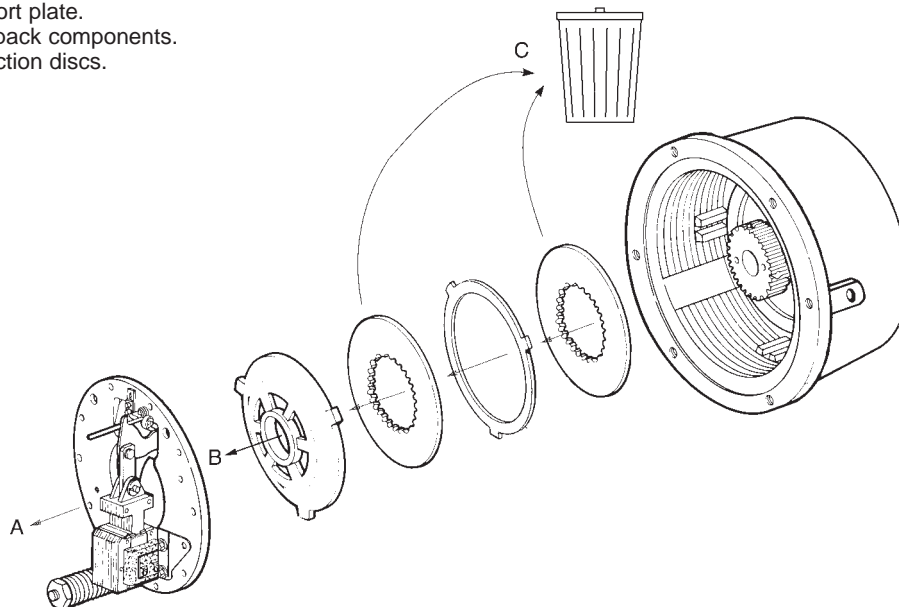
Friction Disc Wear:

1. Discs can wear to 50% of original thickness, or .125".
2. Entire wear of disc pack cannot exceed the thickness of a new disc, or .250".

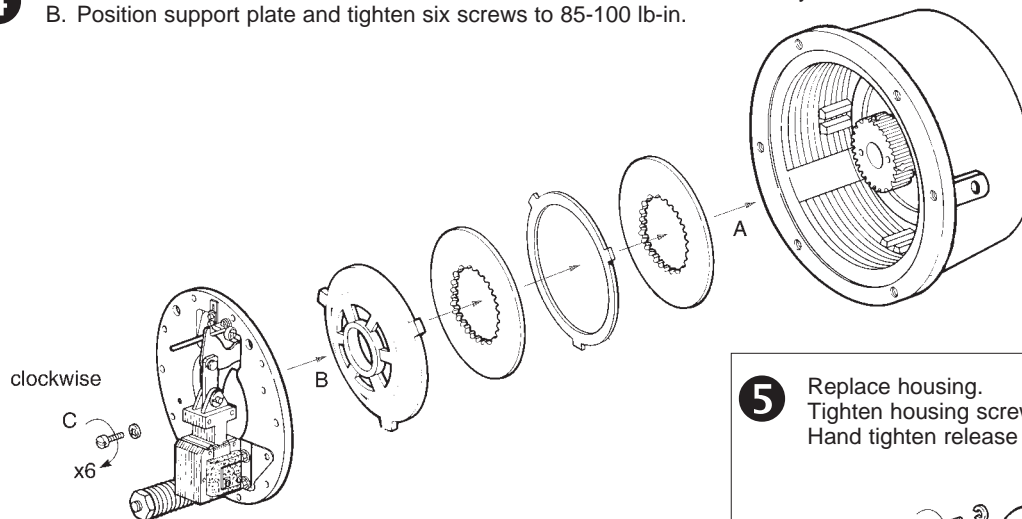
- 2** A. Push plunger down.
B. Pull manual release to hold plunger.
C. Remove support plate screws.



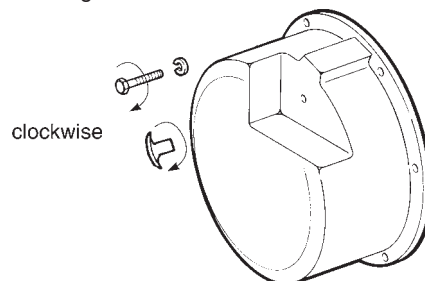
- 3** A. Remove support plate.
B. Remove disc pack components.
C. Discard old friction discs.



- 4** A. Install new friction discs and reassemble in reverse order of disassembly.*
B. Position support plate and tighten six screws to 85-100 lb-in.



- 5** Replace housing.
Tighten housing screws to 130 lb-in.
Hand tighten release knob.



Information required when ordering replacement parts:

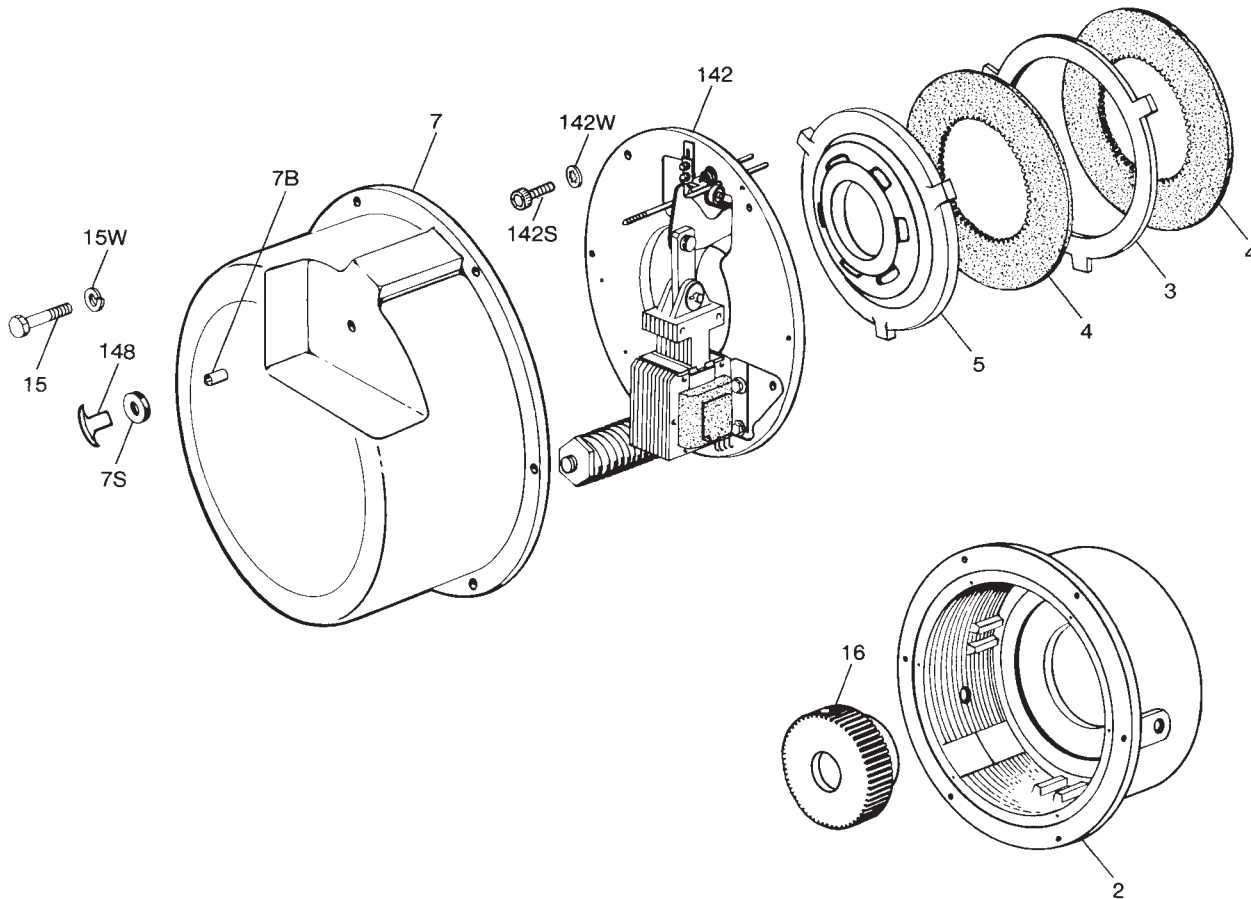
- Give part number of parts needed, brake model number and brake serial number. The brake model and serial number may identify special brakes not covered by this parts list.
- When ordering hubs, specify shaft diameter (hub bore) and keyway.
- Consult factory regarding support plate assembly for vertical and extra items.

- Enclosures are designated as follows:

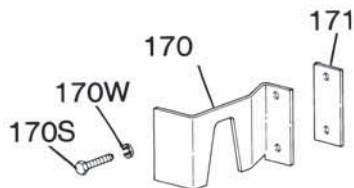
O = Standard
E - Dust-tight, waterproof (DTWP)

General Information

- Vertical details, see P/N 8-078-931-05 and 8-078-962-06.



**Vertical Mounting
below Motor**



**Vertical Mounting
above Motor**

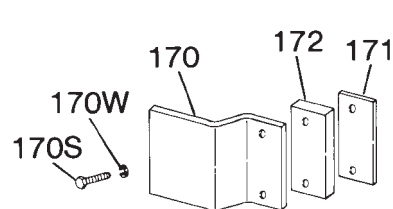


TABLE 1
Components of Standard Horizontal AC or DC Units and Standard Modifications

				Torque (lb-ft)		125		175		230					
				Current		AC		DC		AC		DC			
				Enclosure		O	E	O	E	O	E	O	E		
				Brake Model Number→		1-081-011-02		1-081-012-02		1-081-015-02		1-081-016-02			
						1-081-021-02		1-081-022-02		1-081-025-02		1-081-026-02			
						1-081-031-02		1-081-032-02		1-081-035-02		1-081-036-02			
Type of Modification	Item No.	Description	Part Number↓	1-081-011-02	1-081-012-02	1-081-015-02	1-081-016-02	1-081-021-02	1-081-022-02	1-081-025-02	1-081-026-02	1-081-031-02	1-081-032-02	1-081-035-02	1-081-036-02
	2	Endplate Endplate Endplate and oil seal assembly Endplate and oil seal assembly	8-002-226-01 8-002-227-01 5-22-1011-00 5-22-1012-00	1		1		1		1		1		1	
	2S	Seal (component of endplate and seal assembly)	9-02-0014-00		1		1		1		1		1		1
	3	Stationary disc	8-003-211-01	1	1	1	1	1	1	1	1	2	2	2	2
	4	Friction disc	8-004-104-00	2	2	2	2	2	2	2	2	3	3	3	3
	5	Pressure plate	8-005-109-01	1	1	1	1	1	1	1	1	1	1	1	1
	7	Housing, bearing and seal assembly	5-07-2012-00	1	1	1	1	1	1	1	1	1	1	1	1
	7B	Housing bearing (component of Item 7)	9-04-0050-00	1	1	1	1	1	1	1	1	1	1	1	1
	7D	Pipe plug (drain)	9-33-0325-00	1	1	1	1	1	1	1	1	1	1	1	1
	7S	Housing seal (component of Item 7)	9-02-0017-00	1	1	1	1	1	1	1	1	1	1	1	1
	15	Machine screw (housing)	9-17-3216-00	6	6	6	6	6	6	6	6	6	6	6	6
	15W	Lock washer (housing)	9-45-1332-00	6	6	6	6	6	6	6	6	6	6	6	6
	16	Hub and set screw assembly	5-16-1102-00	1	1	1	1	1	1	1	1	1	1	1	1
	69	Hub and set screw assembly Gasket (housing to endplate)	5-16-1104-00 8-069-203-00		1		1		1		1	1	1	1	1
	140	Lead wire bushing (endplate) (internal connection only) Lead wire bushing (endplate) (internal connection only)	8-140-002-08 8-140-002-10	1	1	1	1	1	1	1	1	1	1	1	1
	142	Support plate assembly Support plate assembly Support plate assembly Support plate assembly Support plate assembly Support plate assembly	5-42-2071-00 5-42-2072-00 5-42-2073-00 5-42-2074-00 5-42-2075-00 5-42-2076-00	1	1		1		1	1		1	1		1
	142S	Cap screw (support plate)	9-17-5016-00	6	6	6	6	6	6	6	6	6	6	6	6
	142W	Conical spring washer (support plate)	9-46-0006-00	6	6	6	6	6	6	6	6	6	6	6	6
	148	Release knob	8-148-804-00	1	1	1	1	1	1	1	1	1	1	1	1
Components for Standard Modifications (most items not shown)															
Vertical Mounting Above Motor	2	Endplate with pins Endplate with pins Endplate and seal assembly with pins Endplate and seal assembly with pins	5-20-1001-00 5-20-1002-00 5-22-1015-00 5-22-1016-00	1		1		1		1		1		1	
	3	Stationary disc	8-003-211-01	1	1	1	1	1	1	1	1	2	2	2	2
	5	Pressure plate	8-005-109-02	1	1	1	1	1	1	1	1	1	1	1	1
	7	Housing and side release assembly	5-07-1002-00	1	1	1	1	1	1	1	1	1	1	1	1
	Not Shown	Vertical mounting pin Vertical mounting pin Vertical mounting spring kit	8-061-204-00 8-061-205-00 5-96-0102-00	3	3	3	3	3	3	3	3	3	3	3	3
170	Plunger guide bracket	Kit 5-55-2002-00	1	1	1	1	1	1	1	1	1	1	1	1	
170S	Cap screw (bracket)														
170W	Lock washer (bracket)														
171	Shim (bracket)														
172	Spacer														
Vertical Mounting below Motor	3	Stationary disc	8-003-211-01	1	1	1	1	1	1	1	1	2	2	2	2
	5	Pressure plate (less pins)	8-005-109-03	1	1	1	1	1	1	1	1	1	1	1	1
	Not Shown	Vertical mounting pin Vertical mounting pin Vertical spring kit	8-061-206-00 8-061-207-00 5-96-0102-00	3	3	3	3	3	3	3	3	3	3	3	3
	170	Plunger guide bracket	8-170-205-00	2	2	1	1	2	2	1	1	2	2	1	1
	170S	Cap screw (bracket)	8-350-002-00	2	2	2	2	2	2	2	2	2	2	2	2
170W	Lock washer (bracket)	9-45-0330-00	2	2	2	2	2	2	2	2	2	2	2	2	
171	Shim (bracket)	8-454-016-00	**	**	**	**	**	**	**	**	**	**	**	**	
Shaft Through Housing	7	Housing, bearing and seal assembly	5-07-2014-00	1	1	1	1	1	1	1	1	1	1	1	1
	24	Shaft bushing (specify bore)	8-024-202-01	1	1	1	1	1	1	1	1	1	1	1	1
	24L	Set screw (shaft bushing)	9-20-3004-00	2	2	2	2	2	2	2	2	2	2	2	2
	24S	Shaft seal (component of item 7)	9-02-0010-00	1	1	1	1	1	1	1	1	1	1	1	1
Space Heater	Not Shown	Heater (115 volt circuit) Kit Heater (230 volt circuit) Kit	5-27-2006-00 5-27-2007-00	1	1	1	1	1	1	1	1	1	1	1	1

*See P/N 8-078-931-05 **As required

